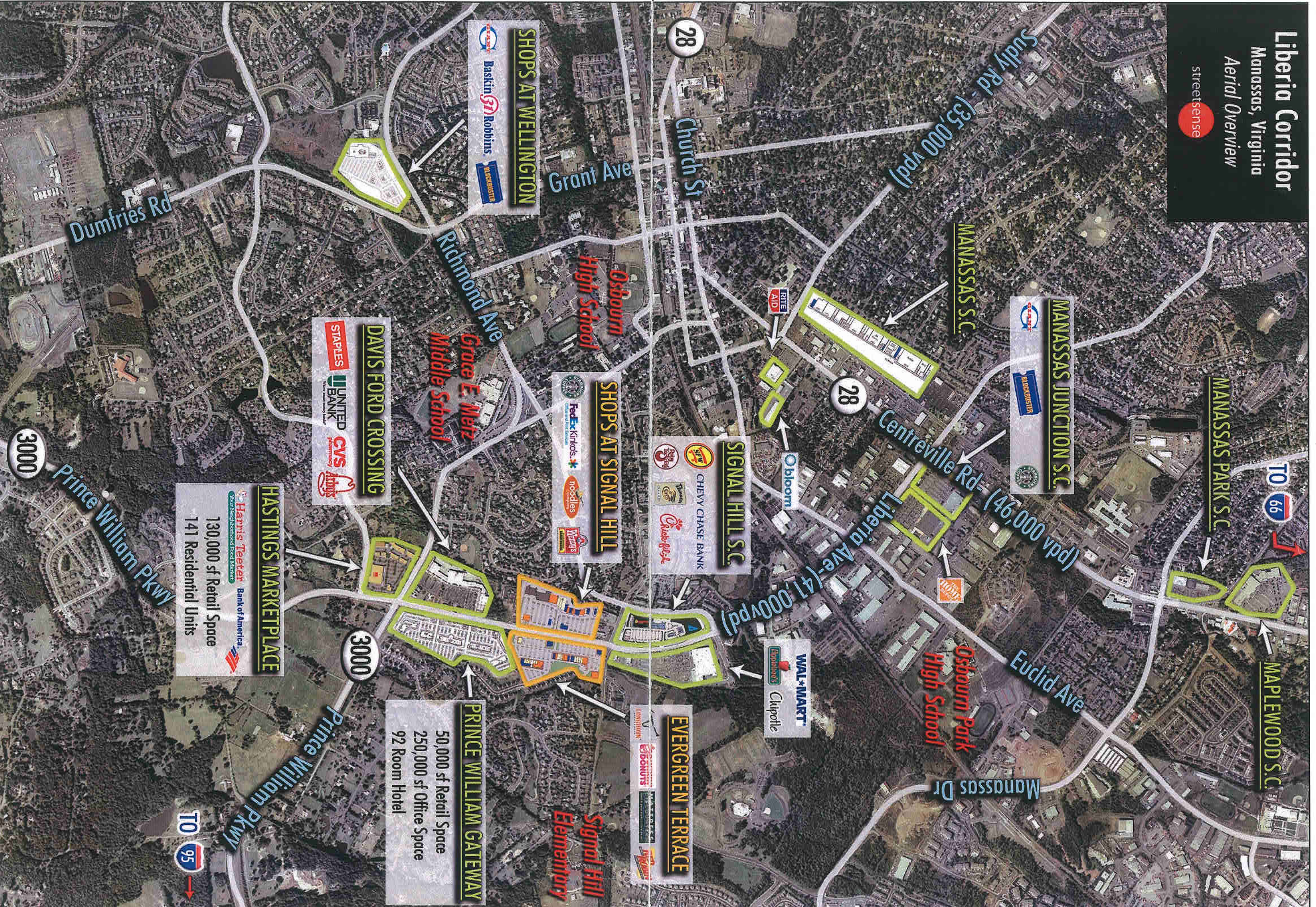


Liberia Corridor
 Manassas, Virginia
 Aerial Overview
 streetsense



SHOPS AT WELLINGTON
 Baskin Robbins
 WAREHOUSES

DAVIS FORD CROSSING
 STAPLES
 UNITED BANK
 CVS
 Arby's

HASTINGS MARKETPLACE
 Harris Teeter
 Bank of America
 130,000 sf Retail Space
 141 Residential Units

PRINCE WILLIAM GATEWAY
 50,000 sf Retail Space
 250,000 sf Office Space
 92 Room Hotel

SHOPS AT SIGNAL HILL
 FedEx Kinko's
 noodles
 Waffle House

SIGNAL HILL S.C.
 CHEVY CHASE BANK
 Popeye's
 Sizzler
 Chick-fil-de

EVERGREEN TERRACE
 Dunkin' Donuts
 Big Boy

MANASSAS JUNCTION S.C.
 Baskin Robbins
 Starbucks

MAPLEWOOD S.C.

WAL-MART
 Eposhield's
 Clorox

28

28

3000

3000

TO 95

TO 66

Dumfries Rd

Grant Ave

Church St

Richmond Ave

Osbourn High School

Grace E. Metz Middle School

MANASSAS S.C.

Centreville Rd = (46,000 vpd)

Liberia Ave = (41,000 vpd)

Euclid Ave

Osbourn Park High School

Manassas Dr

MANASSAS PARK S.C.

Signal Hill Elementary

CONTACTS

Jared Meier
301.652.9020 x258
jmeier@streetsense.com

Lee Engle
301.652.9020 x364
lengle@streetsense.com

Jeff Banks
301.652.9020 x226
jbanks@streetsense.com

AERIAL KEY

- Grocery Anchored
- Power Center / Mass Merchant
- Regional Mall
- Goods & Services
- Lifestyle Center

Walmart

EVERGREEN TERRACE

PRINCE WILLIAM GATEWAY
50,000 SF Retail Space
250,000 SF Office Space
92 Hotel Rooms

SIGNAL HILL S.C.

CHEVY CHASE BANK

SHOPS AT SIGNAL HILL

DAVIS FORD CROSSING

HASTINGS MARKETPLACE

130,000 SF Retail Space
141 Residential Units

